

NEW 40kW and 45kW outdoor units.

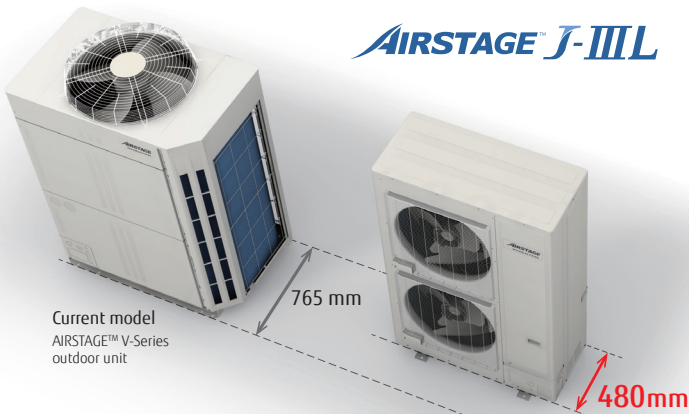
AJY126LELAH | AJY144LELAH

AIRSTAGE™ J-III L Series (Now available in 5 sizes)



SLIM AND COMPACT DESIGN

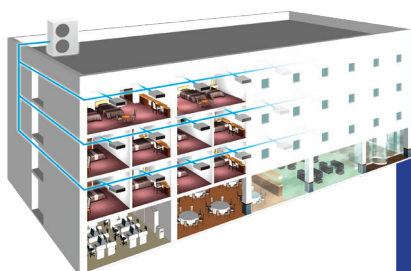
Available in five sizes, from 22.4kW to 45kW, the AIRSTAGE™ J-III L Series includes a powerful, yet compact outdoor unit design, achieving significant space saving compared to conventional outdoor units.



Depth difference
-285mm
J-III L models compared to V Series outdoor units

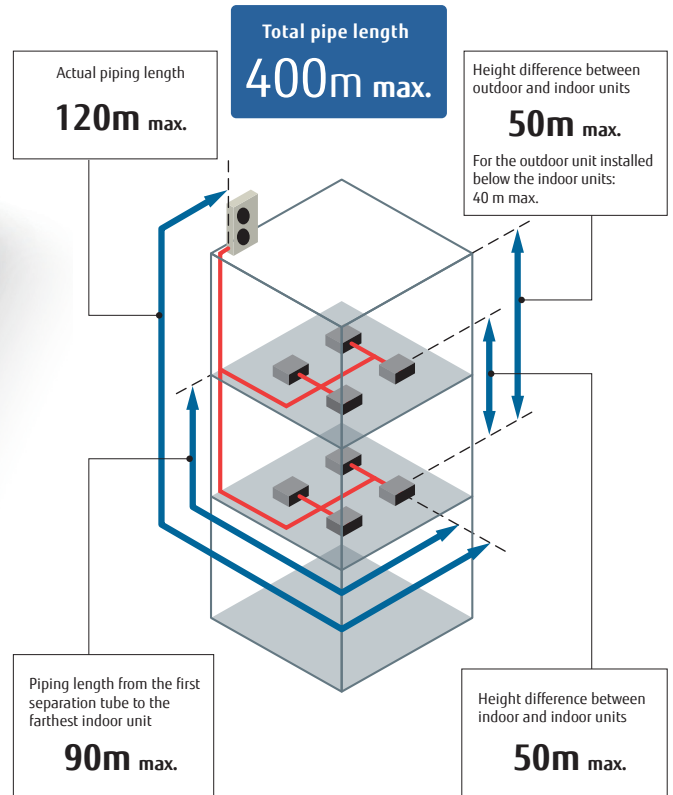
DESIGN VERSATILITY

Up to 30 units* can be connected allowing up to 30 indoor units to connect to one outdoor unit, with 85 models and 14 types of indoor units to choose from, the J-III L Series delivers design versatility for buildings with multiple rooms.
(*AJY144LELAH)



Max. 30 connectable indoor units

FLEXIBLE INSTALLATION



LOW OPERATING SOUND

The large propeller fan and large scroll compressor achieve lower noise output compared to previous models.



FUJITSU GENERAL ASSIST

TECHNICAL SUPPORT

Fujitsu General Assist deploys factory trained technicians in Sydney, Melbourne, Brisbane, Adelaide and Perth and provides access to dedicated Service Agents in all other parts of Australia. These technicians are well equipped with the necessary tools and spare parts to enable them to resolve issues onsite, promptly, offering customers a high first time fix rate and seamless experience. The team also provide commissioning support across the VRF product range for commercial installations.

EXCEPTIONAL AFTER SALES SERVICE

At Fujitsu, we pride ourselves on providing exceptional customer service. Fujitsu General Assist is our in-house customer care and technical support department which was implemented to deliver a high level of support and accessibility to our customers.



PEACE OF MIND

Fujitsu believe in the quality and reliability of every air conditioner we sell, providing a 3 years warranty for commercial applications and 5 years warranty for domestic applications.



3 YEARS
WARRANTY
COMMERCIAL
APPLICATIONS



5 YEARS
WARRANTY
DOMESTIC
APPLICATIONS

SPECIFICATIONS

Rating Capacity Range		HP	14	16
Model No.			AJY126LELAH	AJY144LELAH
Maximum Connectable Indoor Units			1-27	1-30
Power Supply		Ø/V/Hz	3 Phase - 400V, 50Hz	
Capacity	Cooling	kW	40.0	45.0
	Nominal Heating		40.0	45.0
	Max Heating		45.0	50.0
Input Power	Cooling	kW	12.12	14.96
	Nominal Heating		9.71	11.81
	Max Heating		11.81	14.29
EER	Cooling	W/W	3.30	3.01
	Nominal Heating		4.12	3.81
COP	Max Heating	W/W	3.81	3.50
	Cooling		62 / 75	64 / 77
Sound Pressure Level / Power level	Heating	dB(A)	63 / -	65 / -
	Height		1,638	1,638
Net Dimensions	Width	mm	1,080	1,080
	Depth		480	480
	Weight (net)		kgs	213
Refrigerant	Type		R410A	R410A
	Charge	kg	11.0	11.0
Connection Pipe Diameter	Liquid	mm	12.70	12.70
	Gas		28.58	28.58
Total Pipe Length			400	400
Max Height Difference		m	50 / 40 (Outdoor unit : Upper / Lower)	
Operation Temperature Range	Cooling	°C	-5 to 46*	-5 to 46*
	Heating		-20 to 21	-20 to 21

Note : Specifications are based on the following conditions.

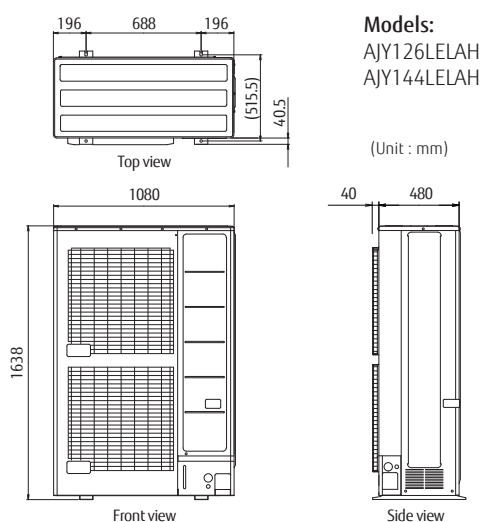
Cooling : Indoor temperature of 27°CDB / 19°CWB, and outdoor temperature of 35°CDB / 24°CWB.

Heating : Indoor temperature of 20°CDB / (15°CWB), and outdoor temperature of 7°CDB / 6°CWB.

Pipe length : 7.5 m; Height difference between outdoor unit and indoor unit : 0 m.

* The cooling operation range of -15 to 46°C connected is allowed when all of the indoor units have a capacity above 5.6kW.

DIMENSIONS



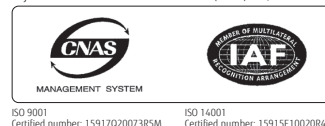
COMPATIBLE SOLUTIONS

Controller Options

A range of controller options enables the J-III Series to be installed in various building setups. Temperature settings and energy management features can be programmed for individual rooms, floors or whole buildings via individual controllers, a centralised controller or a building management system.



Fujitsu General Central Air conditioner (Wuxi) Co., Ltd.



- Specifications and design are subject to change without notice for further improvement.
- **AIRSTAGE™** are worldwide trademarks of FUJITSU GENERAL LIMITED and are registered trademarks in Japan and other countries or areas.
- Other company and product names mentioned herein may be registered trademarks, trademarks or trade names of their respective owners.
- Actual products' colours may be different from the colours shown in this printed material.

Please refer to specifications before installation and servicing this product. Only persons and/or companies qualified and experienced in the installation, service and repair of refrigerant products should be permitted to do so. The purchaser must ensure that the person and/or company who is to install, service or repair this air conditioner has qualifications and experience in refrigerant products. Suitable access for warranty and service is required. Future improvement, specifications, designs of product and availability are subject to change without notice. All Capacity and Energy Efficiency ratings are based on AS/NZS3823.2. Running current is at rated conditions (AS/NZS60335) and does not include compressor start-up or variations in power supply and load conditions.

Copyright© 2018 Fujitsu General Australia. All rights reserved. NPR0519



FUJITSU GENERAL AUSTRALIA

ABN 55 001 229 554

A SUBSIDIARY OF FUJITSU GENERAL LIMITED

www.fujitsugeneral.com.au

EMAIL contact@fujitsugeneral.com.au

PHONE 1300 882 201